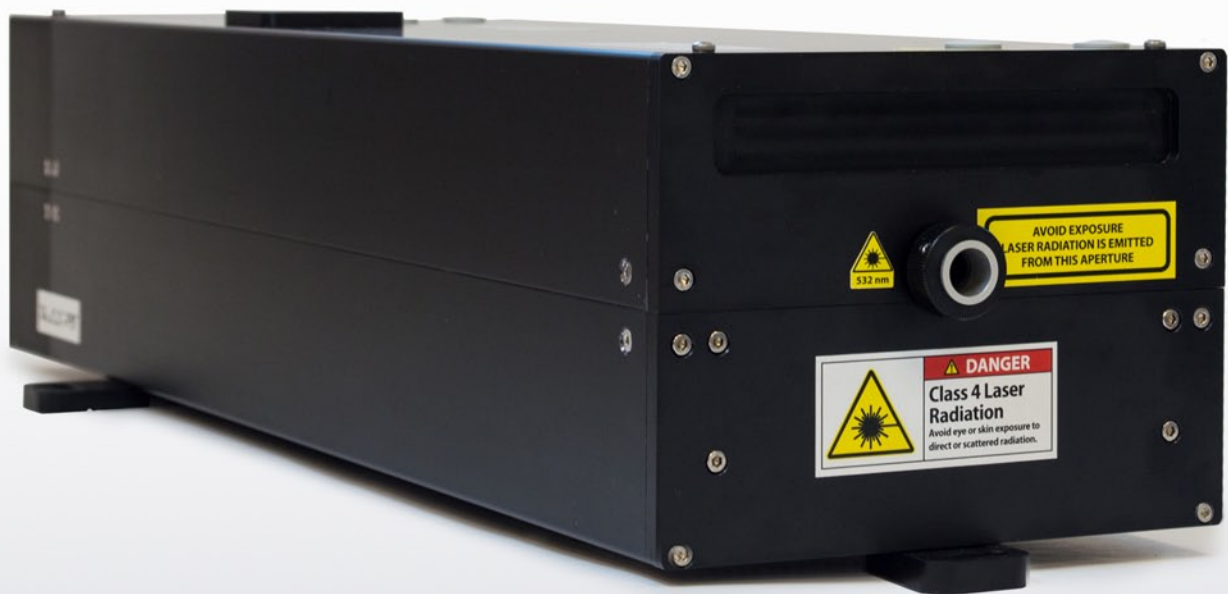


BELL 532/20

DPSS Nd:YAG Q-switched laser

- Diamond cutting
- PIV
- Material processing
- LIDAR
- Pumping tunable Ti:Sapphire laser

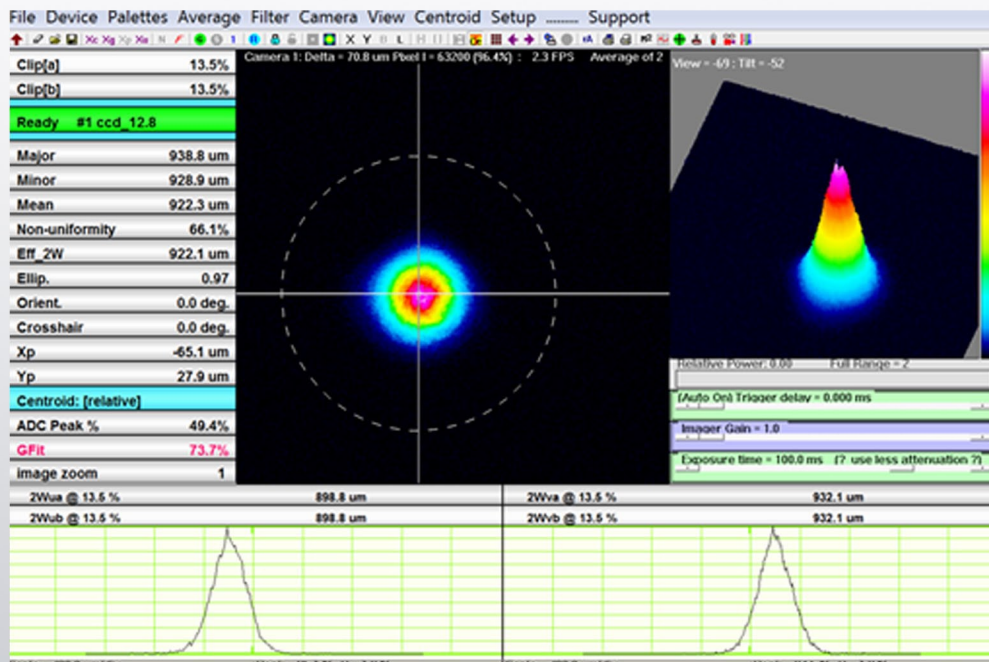


BeLL 532/20

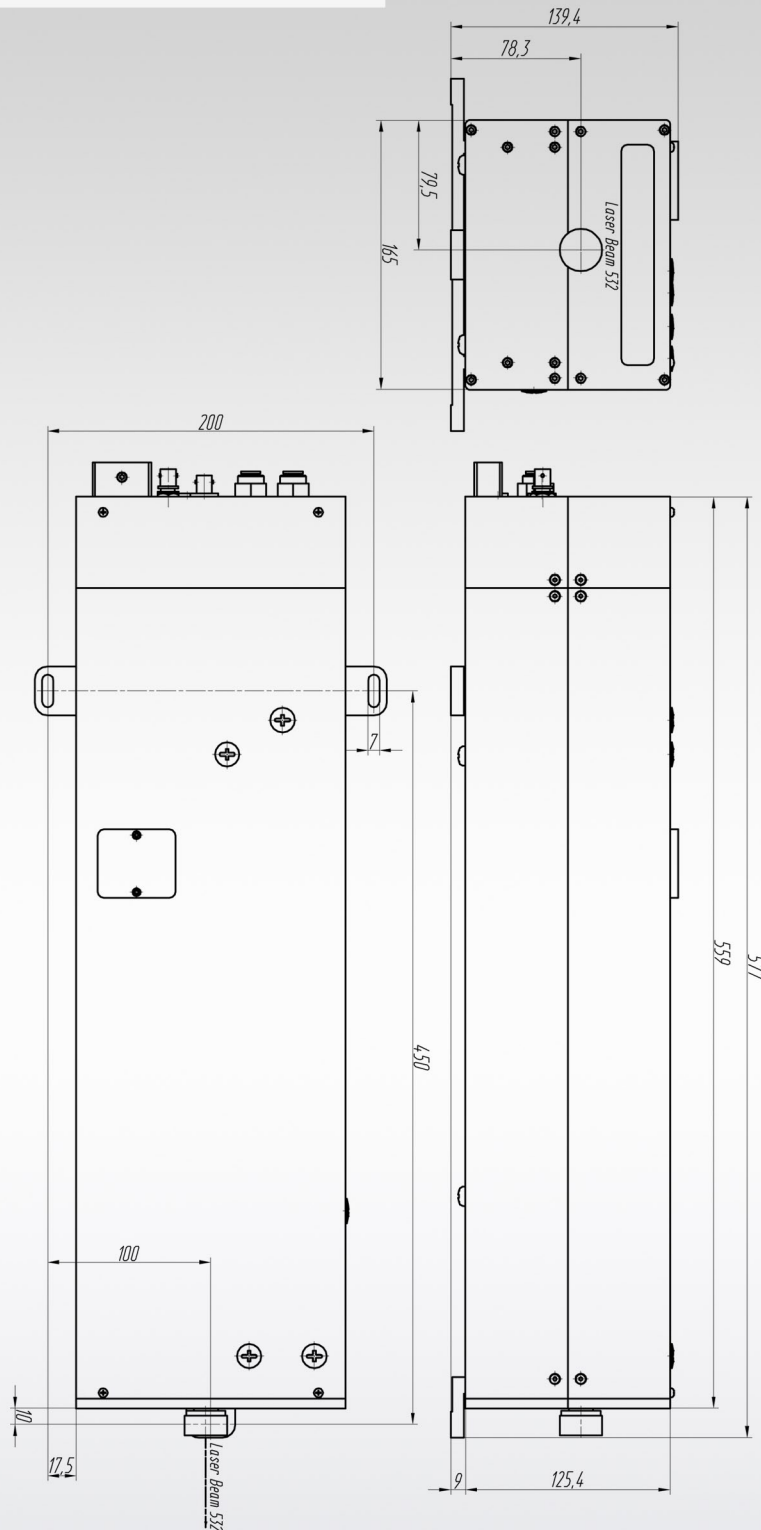


- ◇ High stability and durability of output parameters is provided by special temperature control of nonlinear crystal and by the special design of the resonator
- ◇ Compact and rigid mechanical design
- ◇ Long life-time of pump source
- ◇ Perfect beam quality
- ◇ Thermo stabilization of SH crystal
- ◇ TEM00 operation

Laser type	DPSS (water cooled)
Wavelength	532nm
Power	20 W
Mode	TEM00
Repetition rate	4-10 kHz
Pulse width	<75 ns
Beam diameter	0.9 mm
Beam divergence 8 kHz (FWHM)	<1.6 mrad
$M^2@8$ kHz	<1.3
Stability (8 h)	<2.4 %RMS



BeLL 532/20



Dimensions and Electrical Specifications

Laser head	70mm(W) x 140mm(H) x 580(L)
Power supply	482mm(W) x 80mm(H) x 280(L)
RF-driver	482mm(W) x 80mm(H) x 280(L)
Cooling	Chiller (recirculating water 50 psi minimum)
Electrical	100 - 250 VAC, 8 A, 50-60 Hz
Operating temp	18-30°C