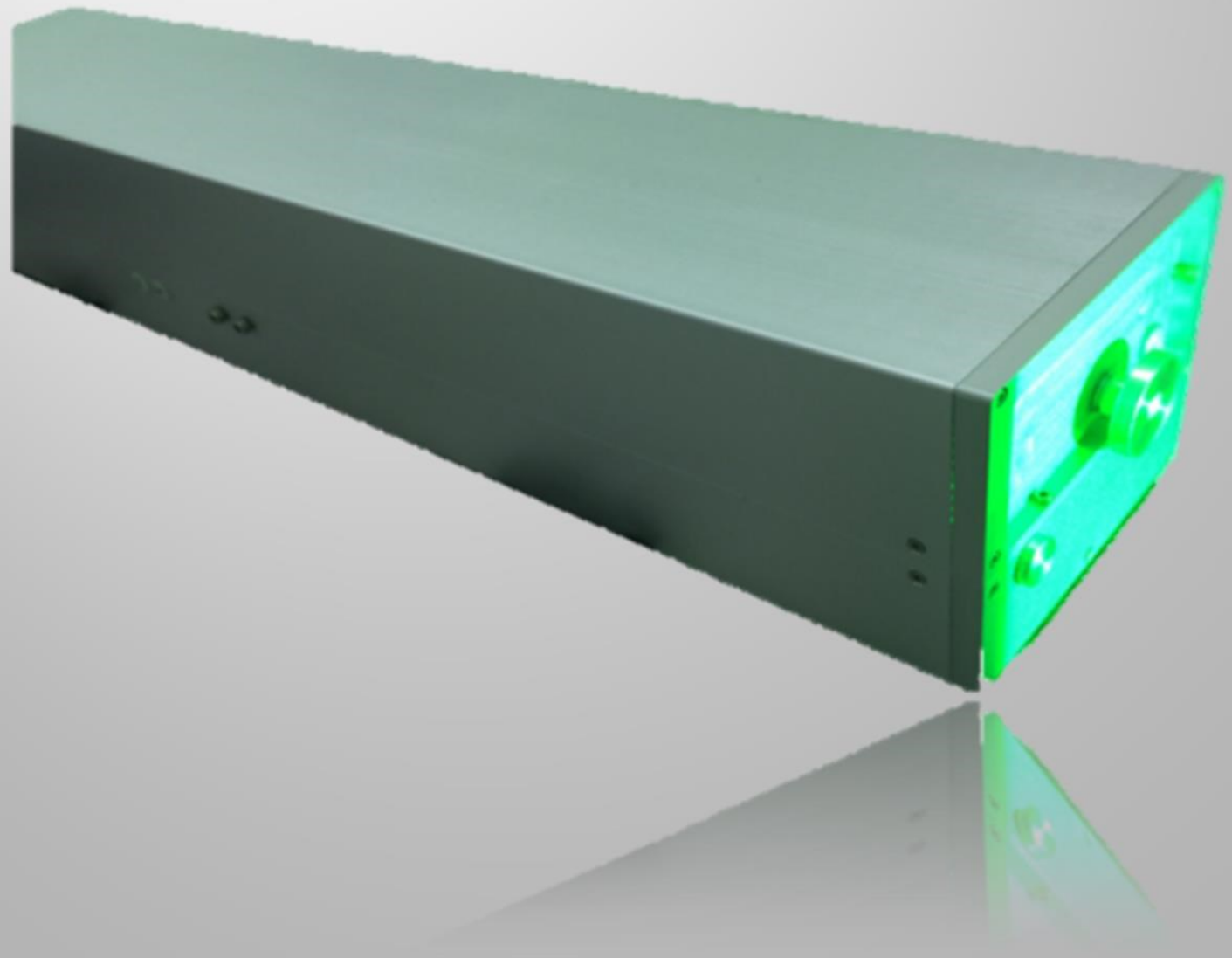


BELL 355-8

DPSS Nd:YAG Q-switched laser



BeLL 355-8



- ❑ High stability and durability of output parameters is provided by special temperature control of nonlinear crystal and by the special design of the resonator
- ❑ Compact and rigid mechanical design
- ❑ Perfect beam quality
- ❑ Long life-time of pump source
- ❑ Thermo stabilization of SH crystals

Laser type	DPSS (water cooled)
Wavelength	355 nm
Output Power	
4 kHz	7 W
6 kHz	8 W
8 kHz	8 W
10 kHz	7 W
Mode	TEM00
Repetition rate,	4 – 10 kHz
Pulse width	< 100 nsec
Beam diameter	0.7 mm
Beam divergence	1.2 mrad
Polarization	Linear, Vertical
Stability (8h)	3.8 % RMS

BeLL 355-8

laser dp

